

TEMPLE



Tools **E**nabling **M**etabolic **P**arents **L**Earning

ADAPTED BY THE DIETITIANS GROUP

BIMDG

British Inherited Metabolic Diseases Group



BASED ON THE ORIGINAL TEMPLE WRITTEN BY
BURGARD AND WENDEL
VERSION 1, DECEMBER 2022

GSD Ib

Supported by **NUTRICIA**
as a service to metabolic medicine

TEMPLE foreword

TEMPLE (Tools Enabling Metabolic Parents LEarning) are a set of teaching slides and booklets that provide essential information about different inherited metabolic disorders that require special diets as part of their management. These teaching tools are aimed at parents who may have an infant or child that has been recently diagnosed with a disorder. They are also useful when teaching children, extended family members, child minders, nursery workers and a school team.

They have been developed by a team of experienced clinical and research metabolic dietitians from the UK who are members of the British Inherited Metabolic Disease Group (BIMDG).

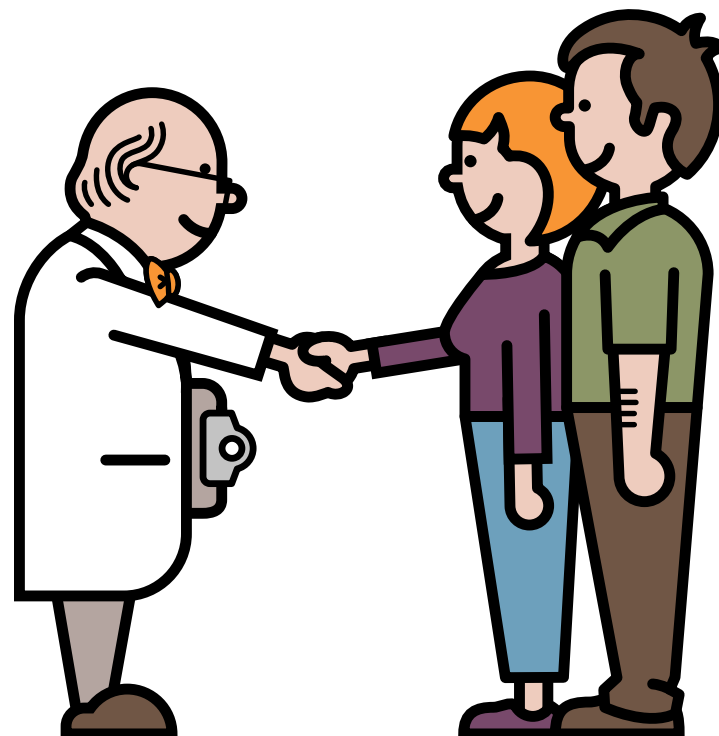
The team are Rachel Skeath, Karen van Wyk, Pat Portnoi and Anita MacDonald. The group is facilitated by Heidi Chan from Nutricia.

Each module produced is reviewed by a consultant clinician who is a member of the BIMDG.

This teaching tool is not designed to replace dietary information that may be given by a dietitian in clinic.

GSD 1b

Information for families following
a new diagnosis



ADAPTED BY THE DIETITIANS GROUP

BIMDG

British Inherited Metabolic Diseases Group



BASED ON THE ORIGINAL TEMPLE WRITTEN BY
BURGARD AND WENDEL

VERSION 1, DECEMBER 2022

TEMPLE

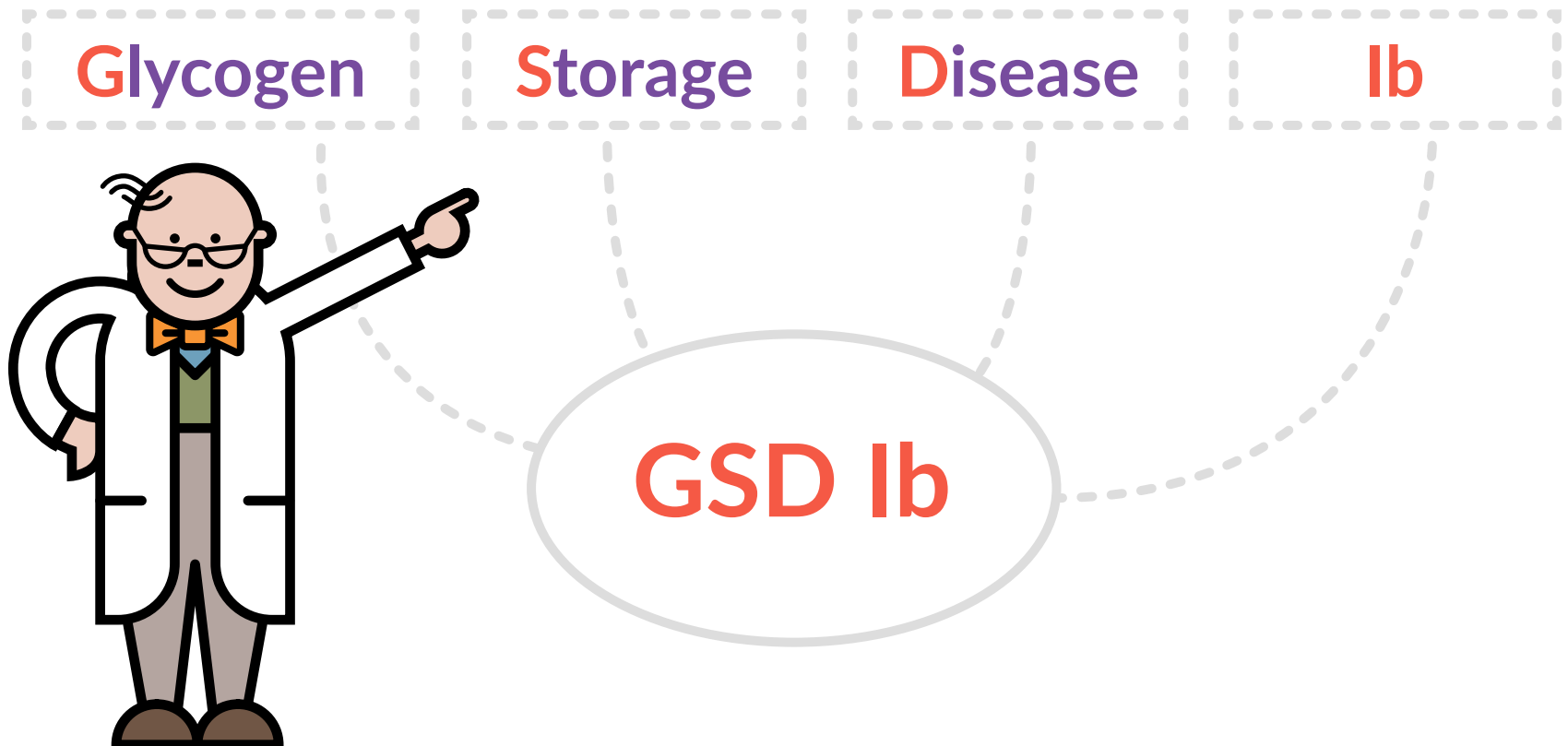


Tools Enabling Metabolic Parents LEarning

Supported by **NUTRICIA**
as a service to metabolic medicine

What is GSD Ib?

GSD Ib stands for Glycogen Storage Disease Ib
It is an inherited metabolic condition



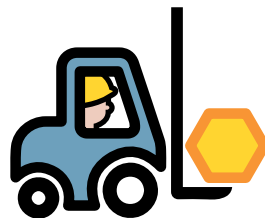
Glucose and glycogen for energy

We eat food to supply our body with energy.

An important supply of energy is carbohydrate which is broken down into a sugar called glucose.

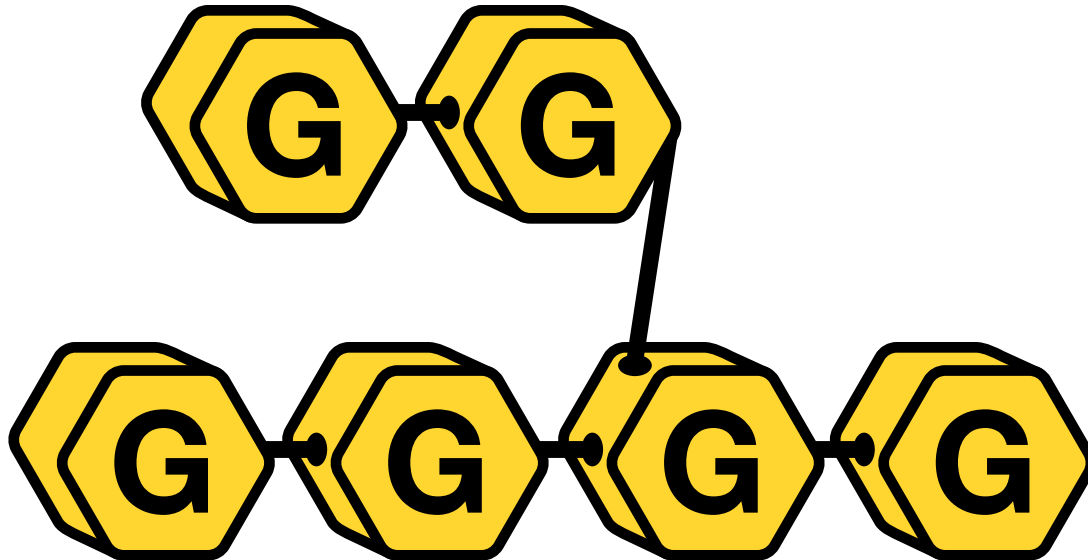
Some of this glucose from food goes into our blood stream and will give a *readily available* supply of energy.

We also put some glucose into storage as an energy reserve. **This is converted into glycogen in the liver and muscle.**



What is glycogen?

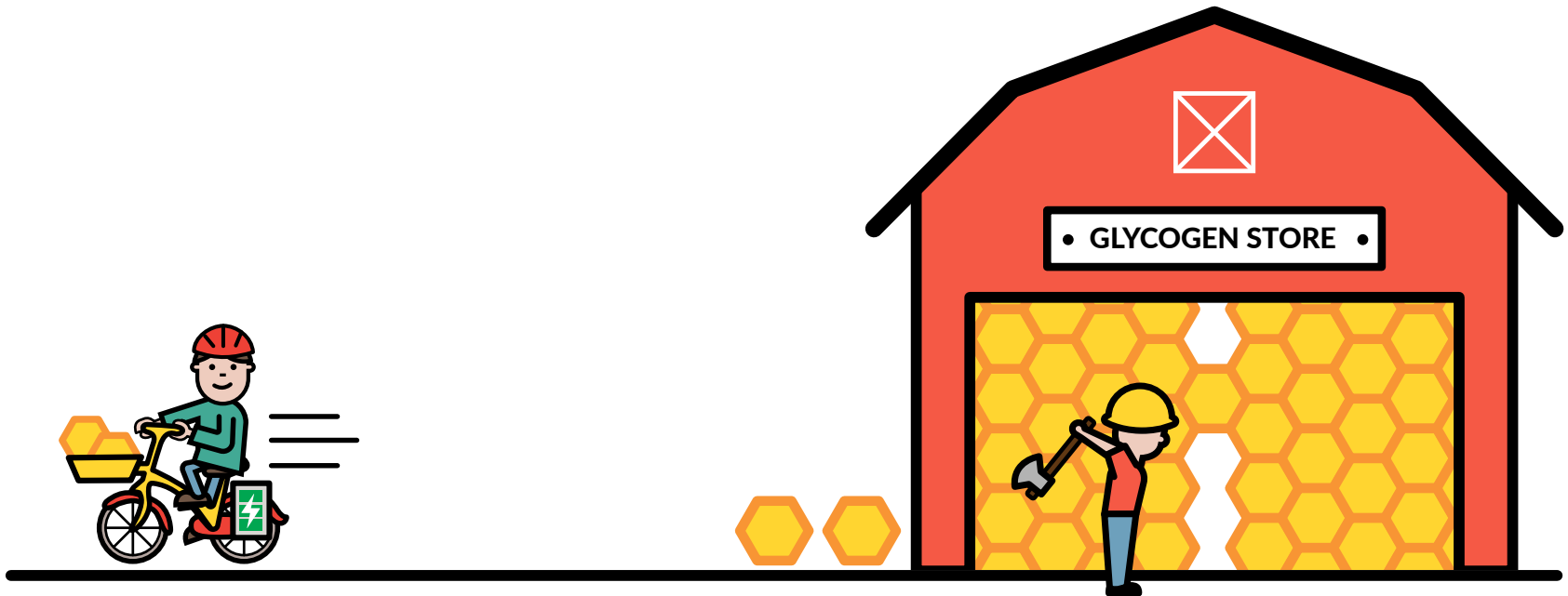
Glycogen is made up of units of glucose joined together.



Glucose and glycogen for energy

When energy is needed, the body uses the *readily available* glucose as its energy supply.

Once glucose is used up, the body then breaks down the stored glycogen to make more glucose.



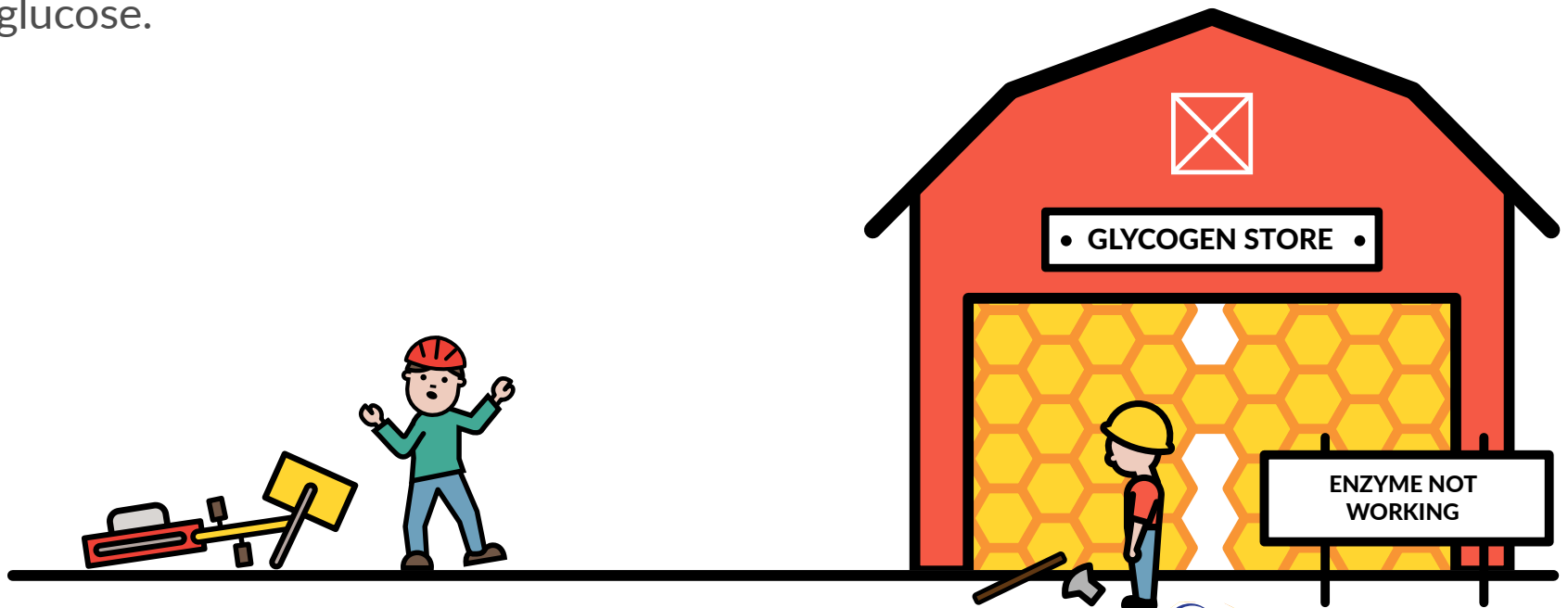
What happens in GSD Ib?

In GSD Ib there are problems breaking down the glycogen stores to release glucose.

The body lacks an enzyme called glucose-6-phosphate translocase that helps break down glycogen into glucose.

This stops the glycogen being used for energy.

It causes a shortage of energy supply and a low blood glucose.



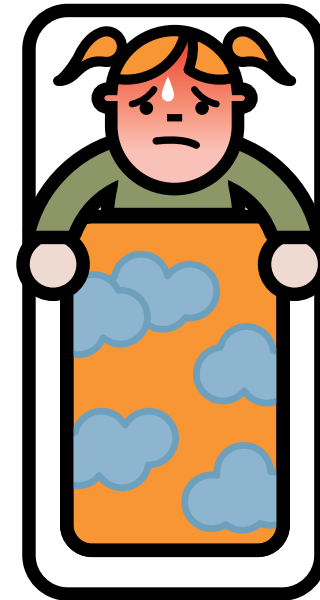
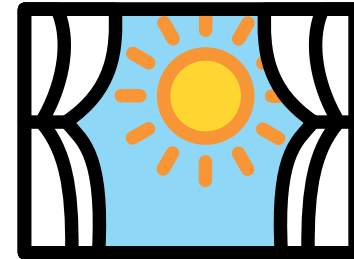
What can go wrong with GSD 1b?

Some babies become ill in the first few months of life.

Symptoms include:

- low blood glucose
- floppiness
- seizures
- large liver
- high levels of lactate and fats in the blood
- poor growth

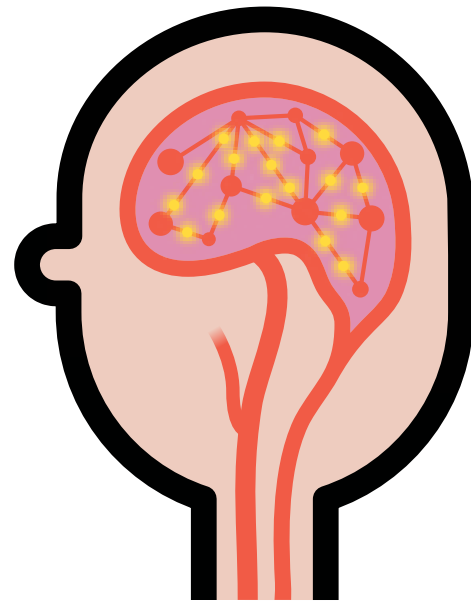
The effects of low blood glucose is very harmful if unmanaged.



What can go wrong with GSD 1b?

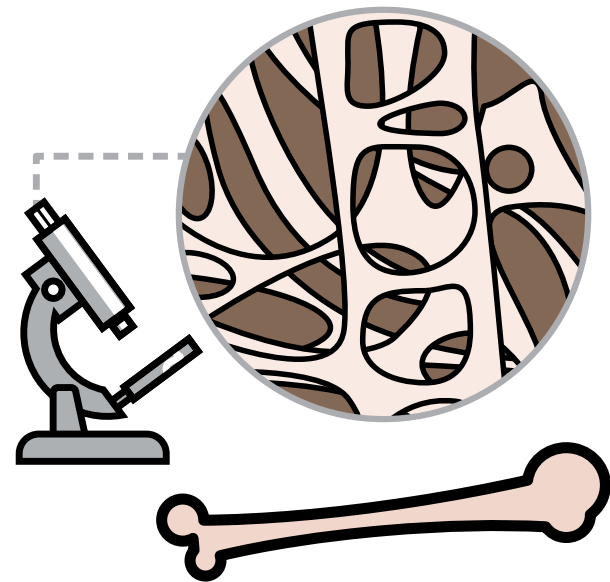
If there is a low blood glucose and this is not corrected, it can lead to coma and brain damage. It may be life threatening.

However, please remember, this can be prevented with timely and correct management.



What else can go wrong with GSD Ib?

- Low levels of white blood cells (neutrophils) may occur. These are essential in fighting bacterial infections. This means that infections may be more common and wounds may take longer to heal
- Ulcers in the mouth and intestine may also occur
- Thin bones
- Some children may not be as tall as expected



How is GSD Ib diagnosed?

GSD Ib is suspected because of the pattern of chemicals found in the blood.

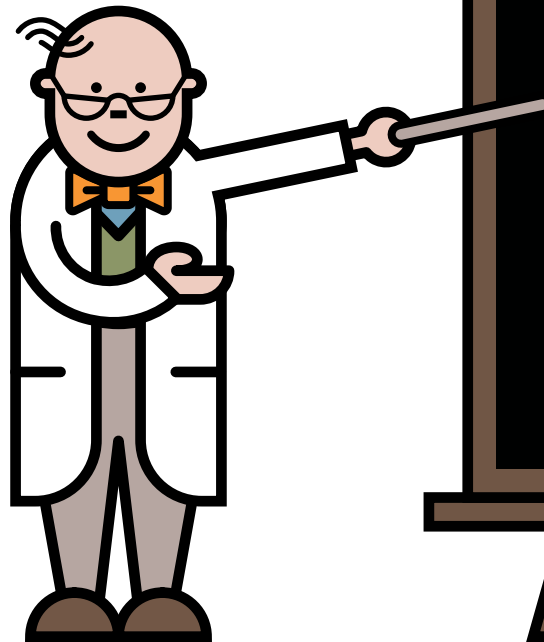
The diagnosis is confirmed by looking for mistakes in the gene for the glucose-6-phosphate translocase enzyme.



How is GSD 1b managed?

It is managed by **avoiding** long periods without feeding.

The length of time that someone can go without feeds or eating is known as the **safe fasting time**.



SAFE FASTING TIMES

- The safe fasting time varies for each person with GSD 1b. Your metabolic team will advise
- It is important that regular feeds are given during the day and at night
- Scheduled feeds or meals should not be missed or delayed

How is GSD 1b managed day to day?

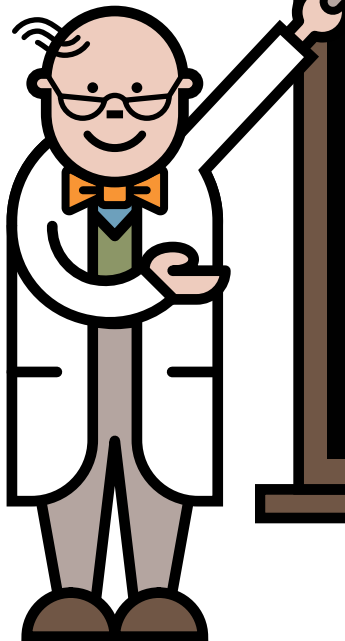
Regular meals and snacks based on carbohydrate



Healthy balanced diet

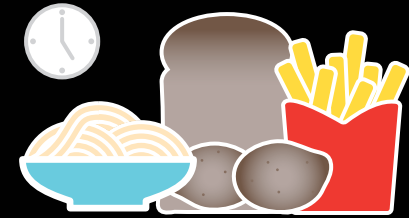


Overnight feeds or regular feeds/
drinks overnight



How is GSD 1b managed day to day?

Regular meals and snacks based on carbohydrate



Healthy balanced diet



Overnight feeds or regular feeds/
drinks overnight



How is GSD 1b managed day to day?

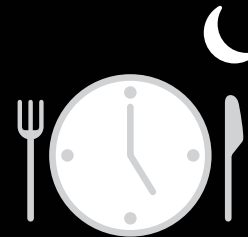
Regular meals and snacks based on carbohydrate



Healthy balanced diet



Overnight feeds or regular feeds/
drinks overnight



Which foods contain carbohydrate?

Many foods contain carbohydrate.

Good sources of carbohydrate include breast milk, bread, rice, potato, pasta and cereals.



Uncooked cornstarch

- Uncooked cornstarch is a source of carbohydrate that is slowly broken down into glucose
- Sometimes a modified cornstarch is used instead
- These are commonly used in GSD Ib to extend safe fasting times
- Your dietitian will talk to you about this

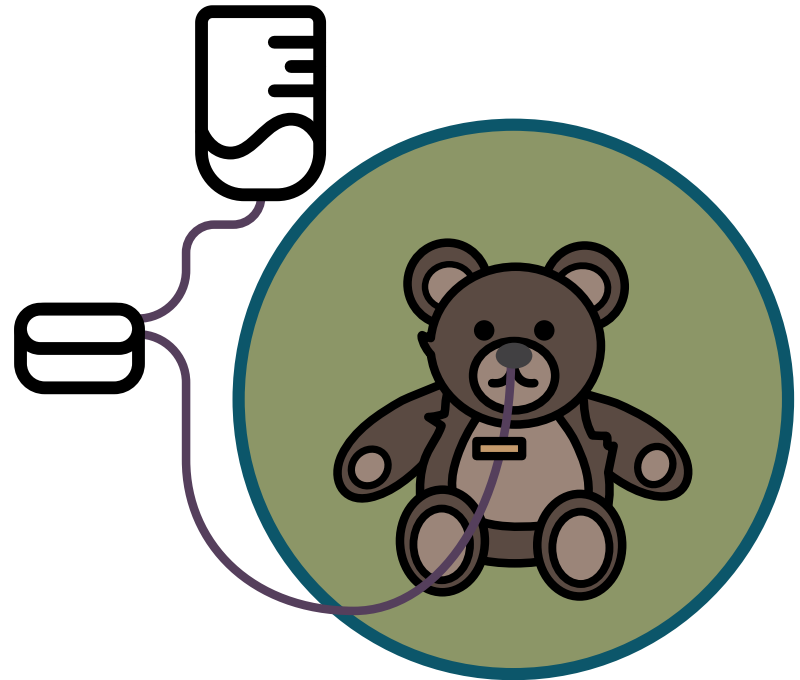


Overnight feeding

Babies and children with GSD Ib cannot safely fast overnight without their blood glucose dropping too low.

They will need to have regular drinks or feeds during the night.

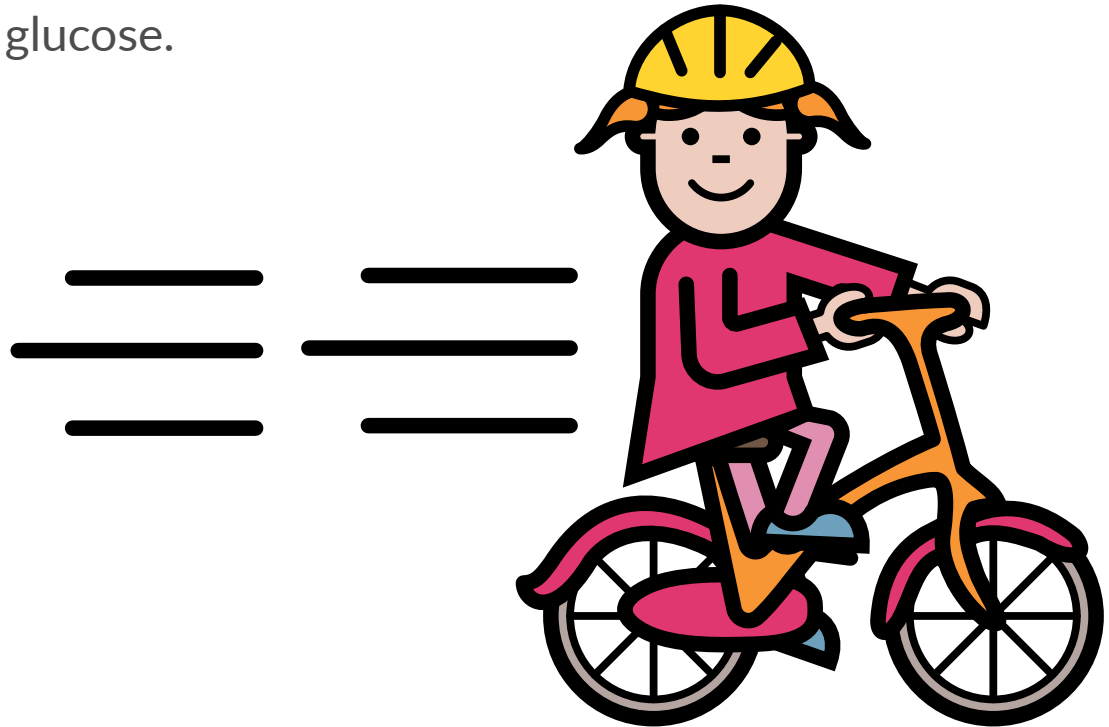
Many babies and children are fed through a tube via their nose overnight so that they can sleep without having to wake up.



GSD Ib and exercise

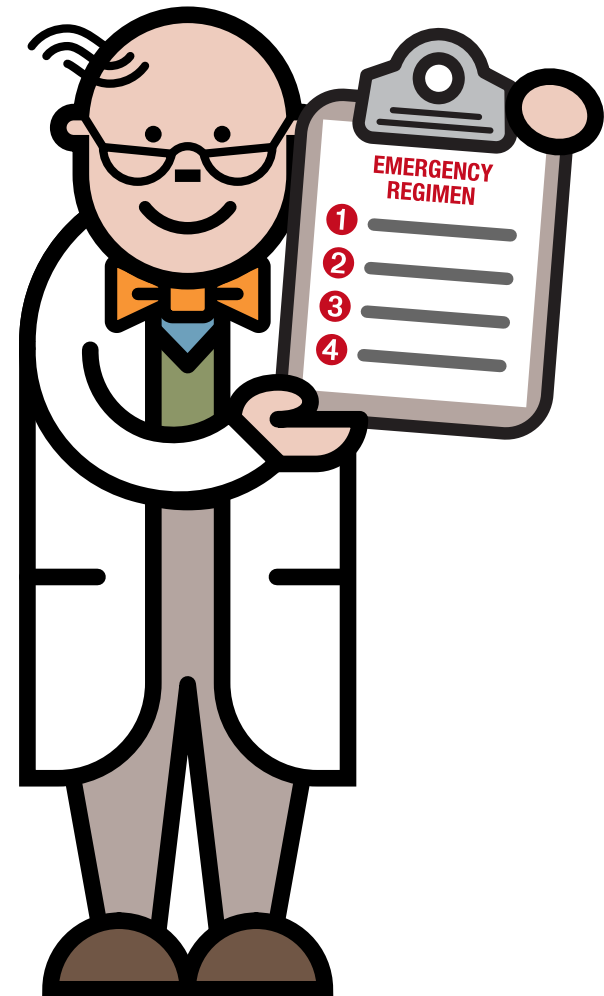
Exercise and activity helps keep children with GSD Ib healthy.

It might be advised that a snack or drink is taken before exercise. This will supply an extra source of glucose.



How is GSD 1b managed during illness?

- During illness your child may not be able to follow their usual feeding plan
- You will be given an emergency regimen to use during this time
- This provides energy and prevents low blood glucose



How is GSD Ib managed during illness?

Start the emergency regimen.
This is made up of glucose polymer



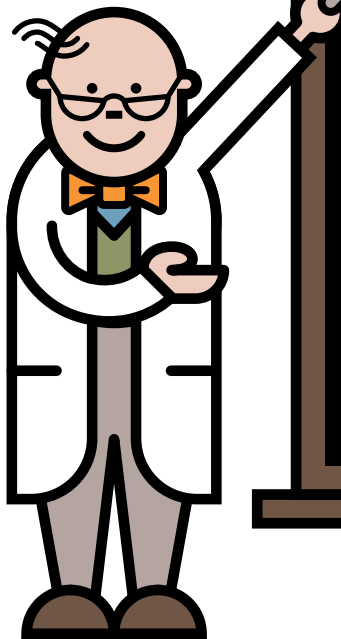
It must be given day and night



Phone your metabolic team
for help if your child is unwell



Do not use sugar-free drinks during illness



How is GSD Ib managed during illness?

Start the emergency regimen.
This is made up of glucose polymer



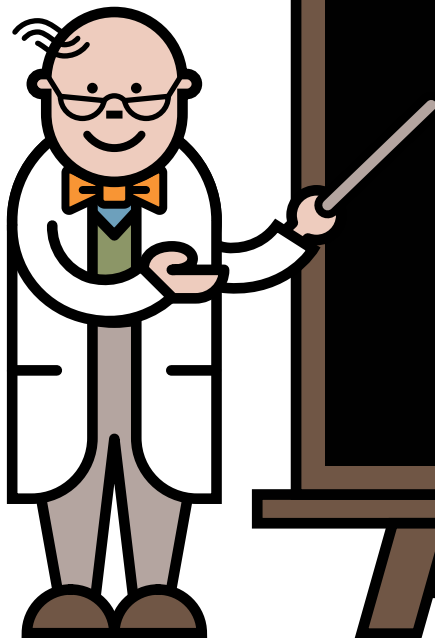
It must be given day and night



Phone your metabolic team
for help if your child is unwell



Do not use sugar-free drinks during illness



How is GSD Ib managed during illness?

Start the emergency regimen.
This is made up of glucose polymer



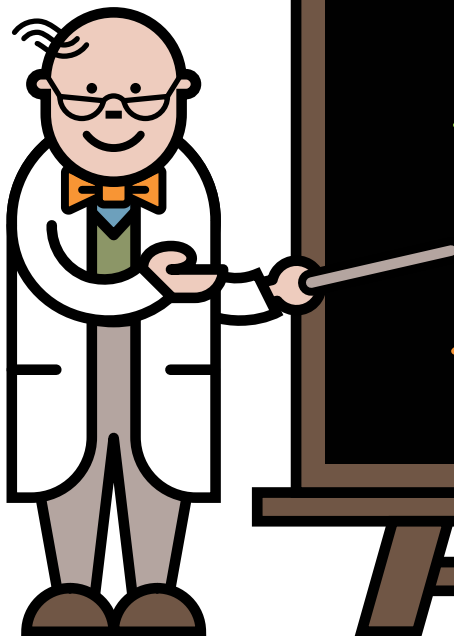
It must be given day and night



Phone your metabolic team
for help if your child is unwell



Do not use sugar-free drinks during illness



Checklist for illness

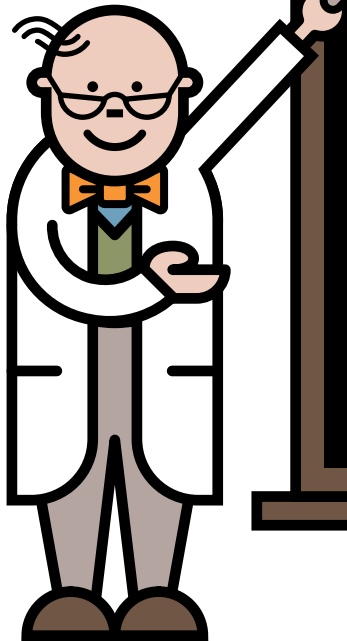
Always take full amounts of emergency feeds as prescribed



If your child vomits or refuses the emergency feeds and/or you are worried, go immediately to the hospital



Phone your metabolic team



Checklist for illness

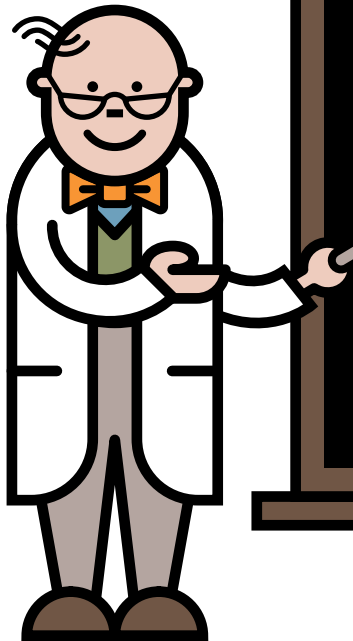
Always take full amounts of emergency feeds as prescribed



If your child vomits or refuses the emergency feeds and/or you are worried, go immediately to the hospital



Phone your metabolic team



Checklist for illness

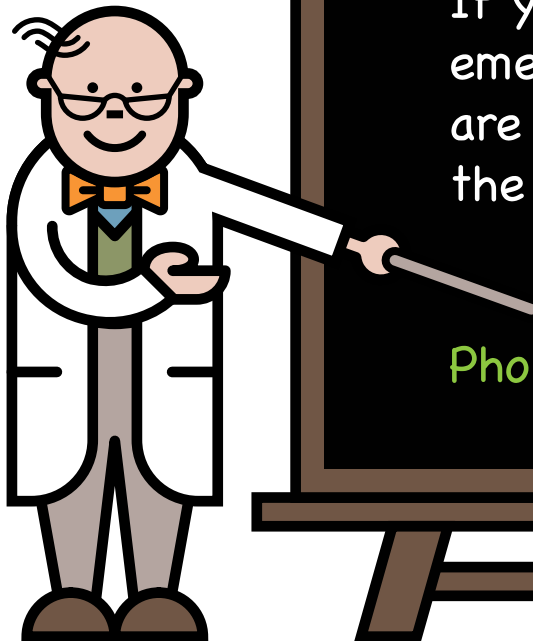
Always take full amounts of emergency feeds as prescribed



If your child vomits or refuses the emergency feeds and/or you are worried, go immediately to the hospital

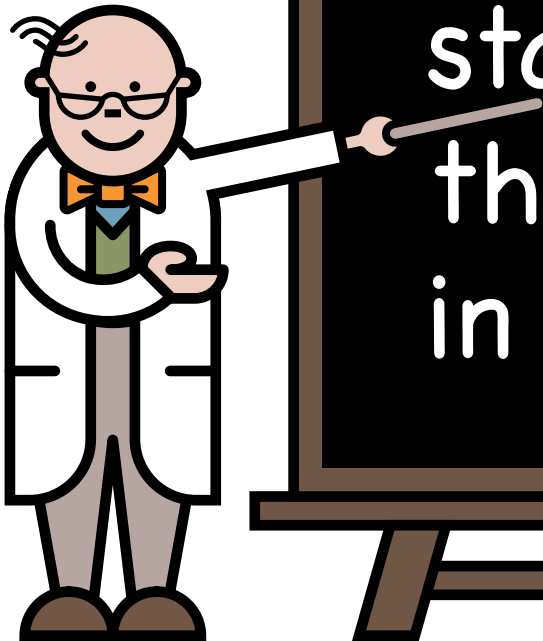


Phone your metabolic team

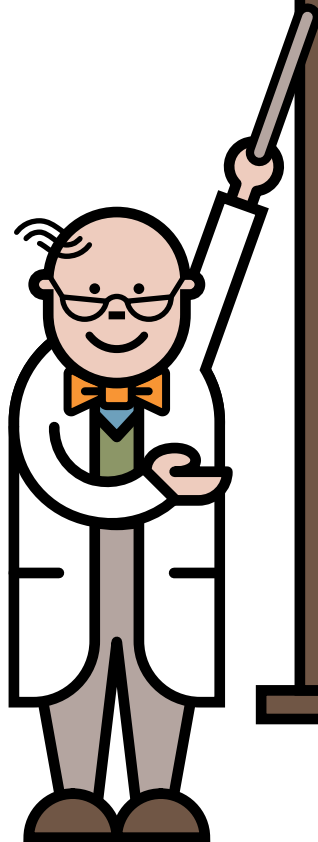


Key message

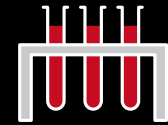
It is imperative that emergency feeds are started **promptly** and there are **no delays** in management.



How is GSD 1b monitored?



Blood tests to check metabolic control



Safe fasting times are tested by monitoring blood glucose levels and other chemicals in the blood



Height and weight



Medical and development checks

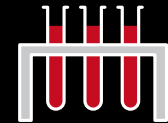


Emergency feeds are adjusted with age and weight



How is GSD 1b monitored?

Blood tests to check metabolic control



Safe fasting times are tested by monitoring blood glucose levels and other chemicals in the blood



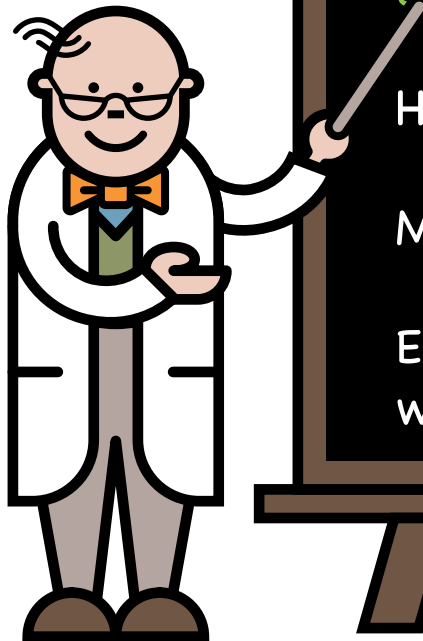
Height and weight



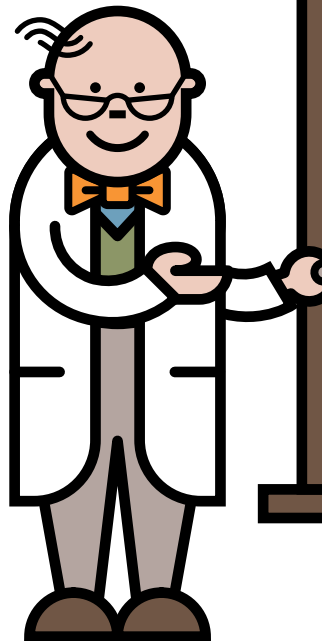
Medical and development checks



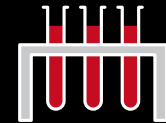
Emergency feeds are adjusted with age and weight



How is GSD 1b monitored?



Blood tests to check metabolic control



Safe fasting times are tested by monitoring blood glucose levels and other chemicals in the blood



Height and weight



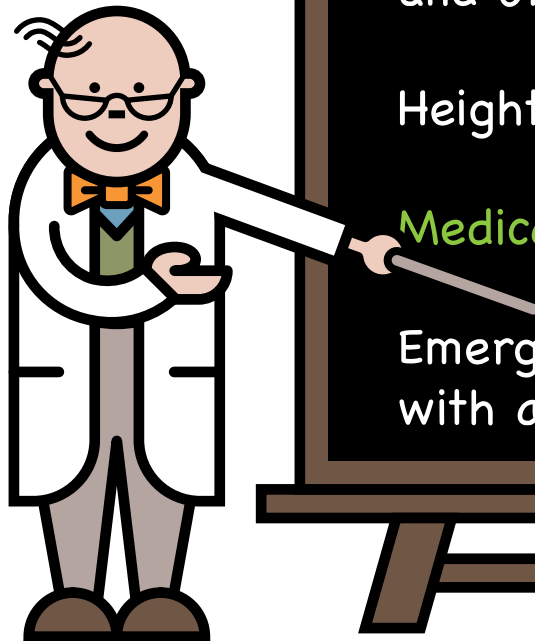
Medical and development checks



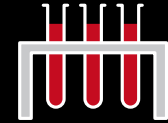
Emergency feeds are adjusted with age and weight



How is GSD Ib monitored?



Blood tests to check metabolic control



Safe fasting times are tested by monitoring blood glucose levels and other chemicals in the blood



Height and weight



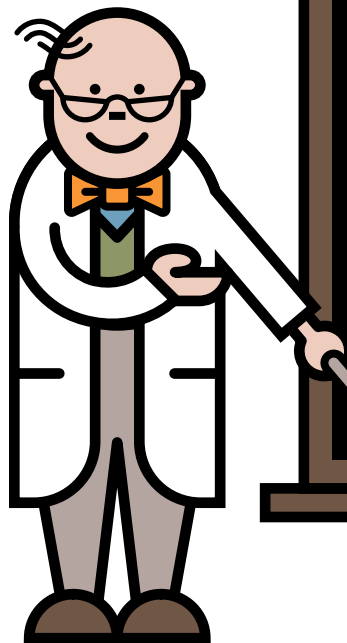
Medical and development checks



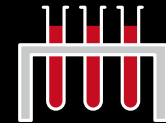
Emergency feeds are adjusted with age and weight



How is GSD 1b monitored?



Blood tests to check metabolic control



Safe fasting times are tested by monitoring blood glucose levels and other chemicals in the blood



Height and weight



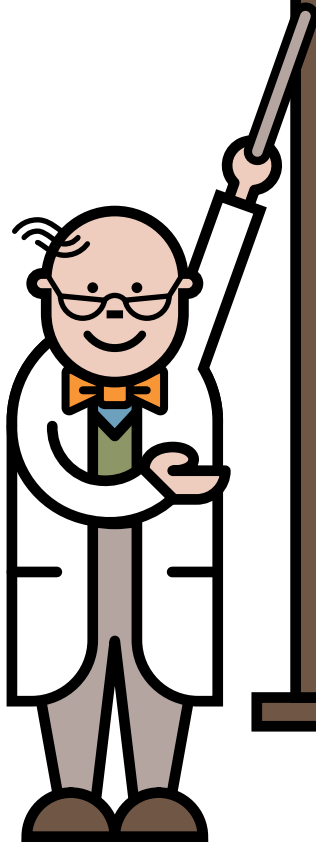
Medical and development checks



Emergency feeds are adjusted with age and weight



Chromosomes, genes, mutations



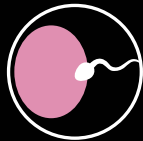
Humans have chromosomes composed of DNA



Genes are pieces of DNA that carry the genetic instructions. Each chromosome may have several thousand genes



The word mutation means a change or error in a genetic instruction

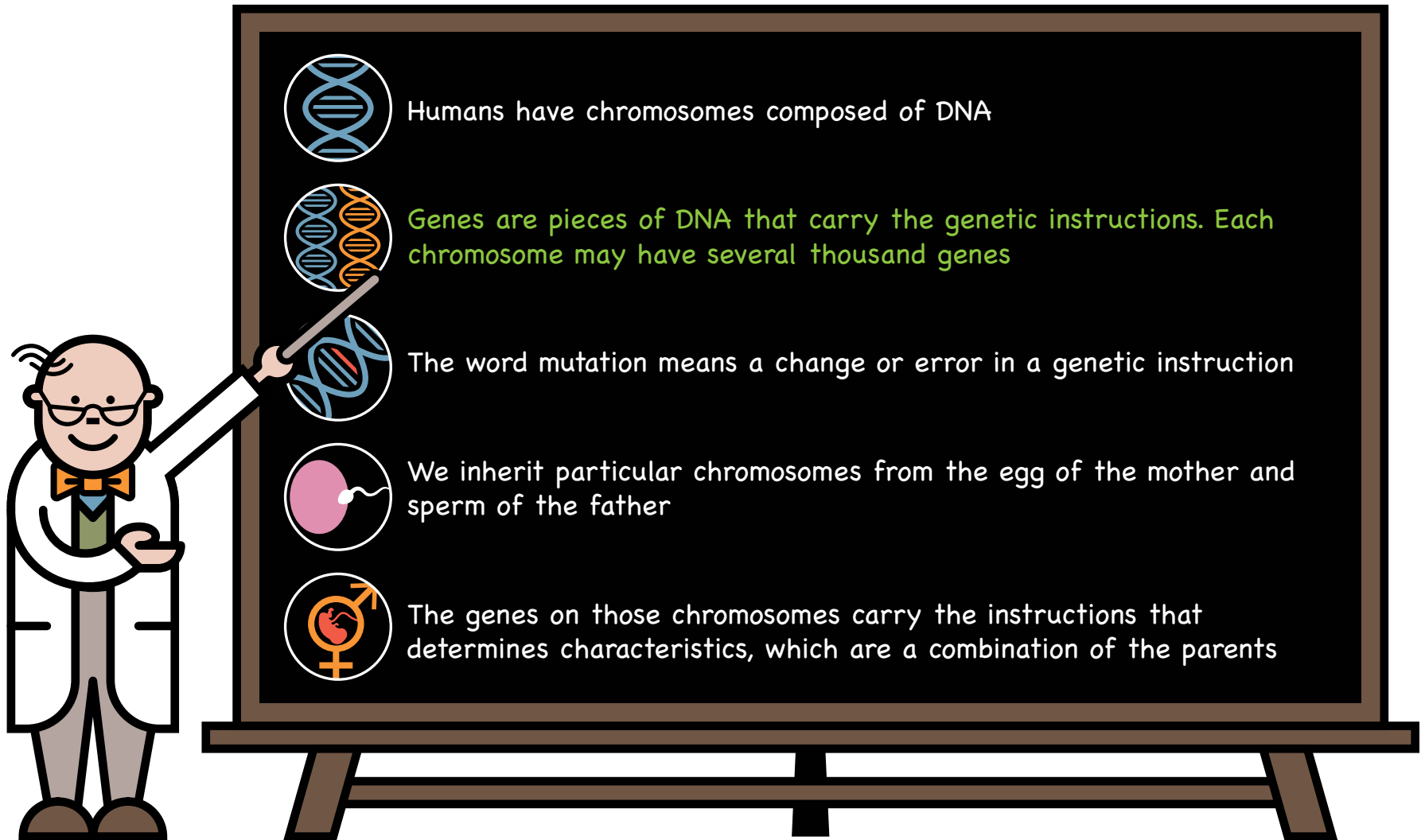



We inherit particular chromosomes from the egg of the mother and sperm of the father





The genes on those chromosomes carry the instructions that determines characteristics, which are a combination of the parents


Chromosomes, genes, mutations




 Humans have chromosomes composed of DNA

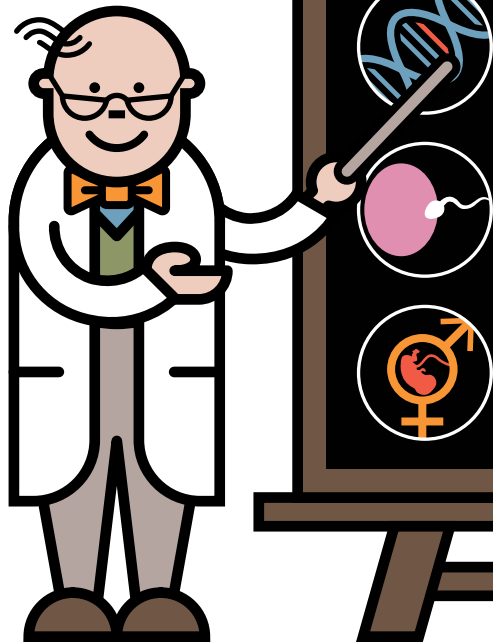
 Genes are pieces of DNA that carry the genetic instructions. Each chromosome may have several thousand genes

 The word mutation means a change or error in a genetic instruction

 We inherit particular chromosomes from the egg of the mother and sperm of the father

 The genes on those chromosomes carry the instructions that determines characteristics, which are a combination of the parents

Chromosomes, genes, mutations



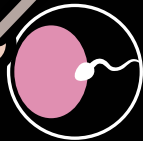
Humans have chromosomes composed of DNA



Genes are pieces of DNA that carry the genetic instructions. Each chromosome may have several thousand genes



The word mutation means a change or error in a genetic instruction

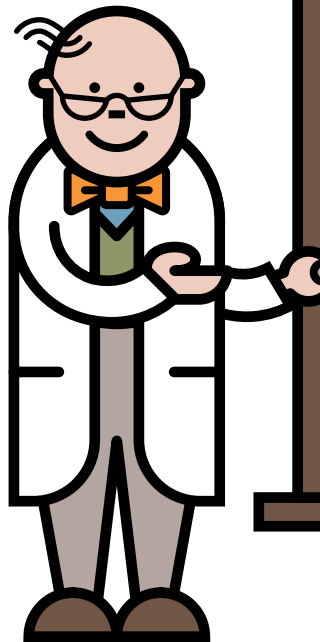


We inherit particular chromosomes from the egg of the mother and sperm of the father



The genes on those chromosomes carry the instructions that determines characteristics, which are a combination of the parents

Chromosomes, genes, mutations



Humans have chromosomes composed of DNA



Genes are pieces of DNA that carry the genetic instructions. Each chromosome may have several thousand genes



The word mutation means a change or error in a genetic instruction

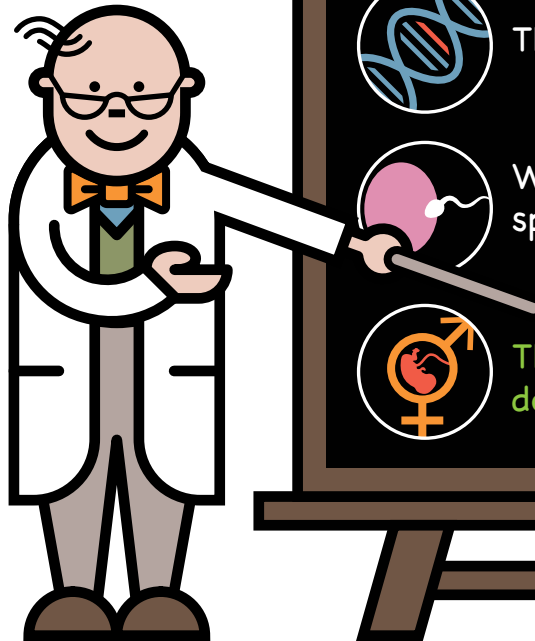


We inherit particular chromosomes from the egg of the mother and sperm of the father



The genes on those chromosomes carry the instructions that determines characteristics, which are a combination of the parents

Chromosomes, genes, mutations



Humans have chromosomes composed of DNA



Genes are pieces of DNA that carry the genetic instructions. Each chromosome may have several thousand genes



The word mutation means a change or error in a genetic instruction

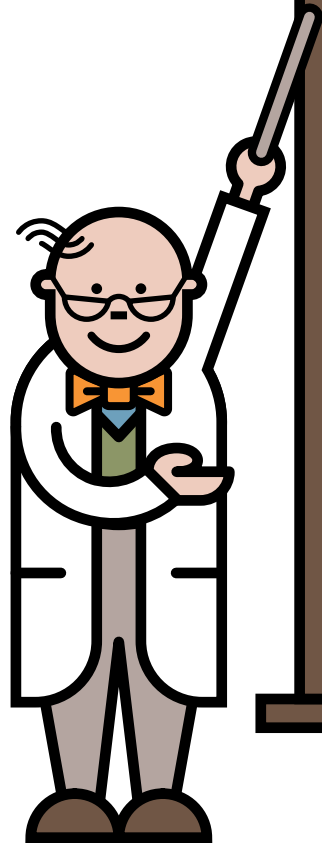


We inherit particular chromosomes from the egg of the mother and sperm of the father



The genes on those chromosomes carry the instructions that determines characteristics, which are a combination of the parents

Inheritance



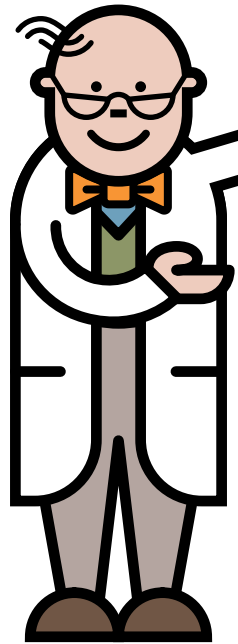
GSD 1b is an inherited condition. There is nothing that could have been done to prevent your baby from having GSD 1b

Everyone has a pair of genes that makes glucose-6-phosphate translocase enzyme. In children with GSD 1b, neither of these genes work correctly. These children inherit one non-working glucose-6-phosphate translocase gene from each parent

Parents of children with GSD 1b are carriers of the condition

Carriers do not have GSD 1b because the other gene of this pair is working correctly

Inheritance



GSD 1b is an inherited condition. There is nothing that could have been done to prevent your baby from having GSD 1b

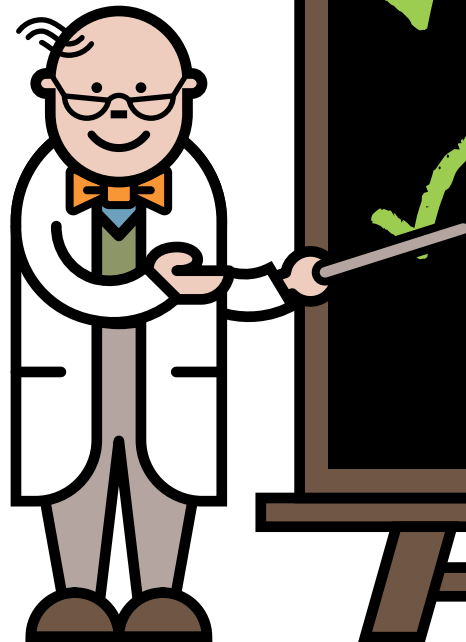


Everyone has a pair of genes that makes glucose-6-phosphate translocase enzyme. In children with GSD 1b, neither of these genes work correctly. These children inherit one non-working glucose-6-phosphate translocase gene from each parent

Parents of children with GSD 1b are carriers of the condition

Carriers do not have GSD 1b because the other gene of this pair is working correctly

Inheritance



GSD 1b is an inherited condition. There is nothing that could have been done to prevent your baby from having GSD 1b



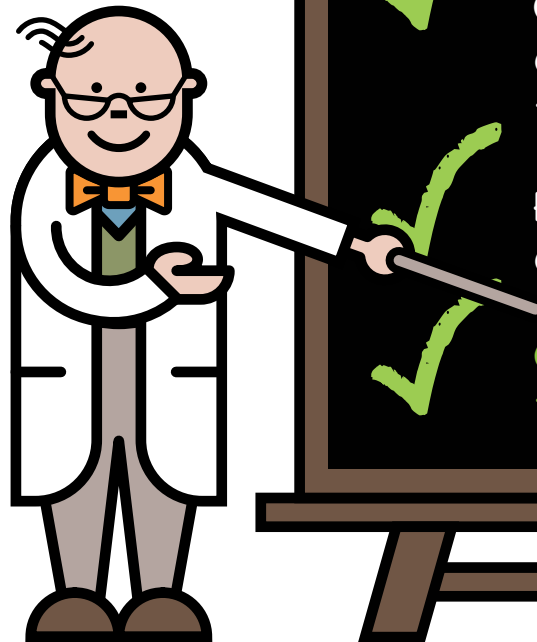
Everyone has a pair of genes that makes glucose-6-phosphate translocase enzyme. In children with GSD 1b, neither of these genes work correctly. These children inherit one non-working glucose-6-phosphate translocase gene from each parent



Parents of children with GSD 1b are carriers of the condition

Carriers do not have GSD 1b because the other gene of this pair is working correctly

Inheritance



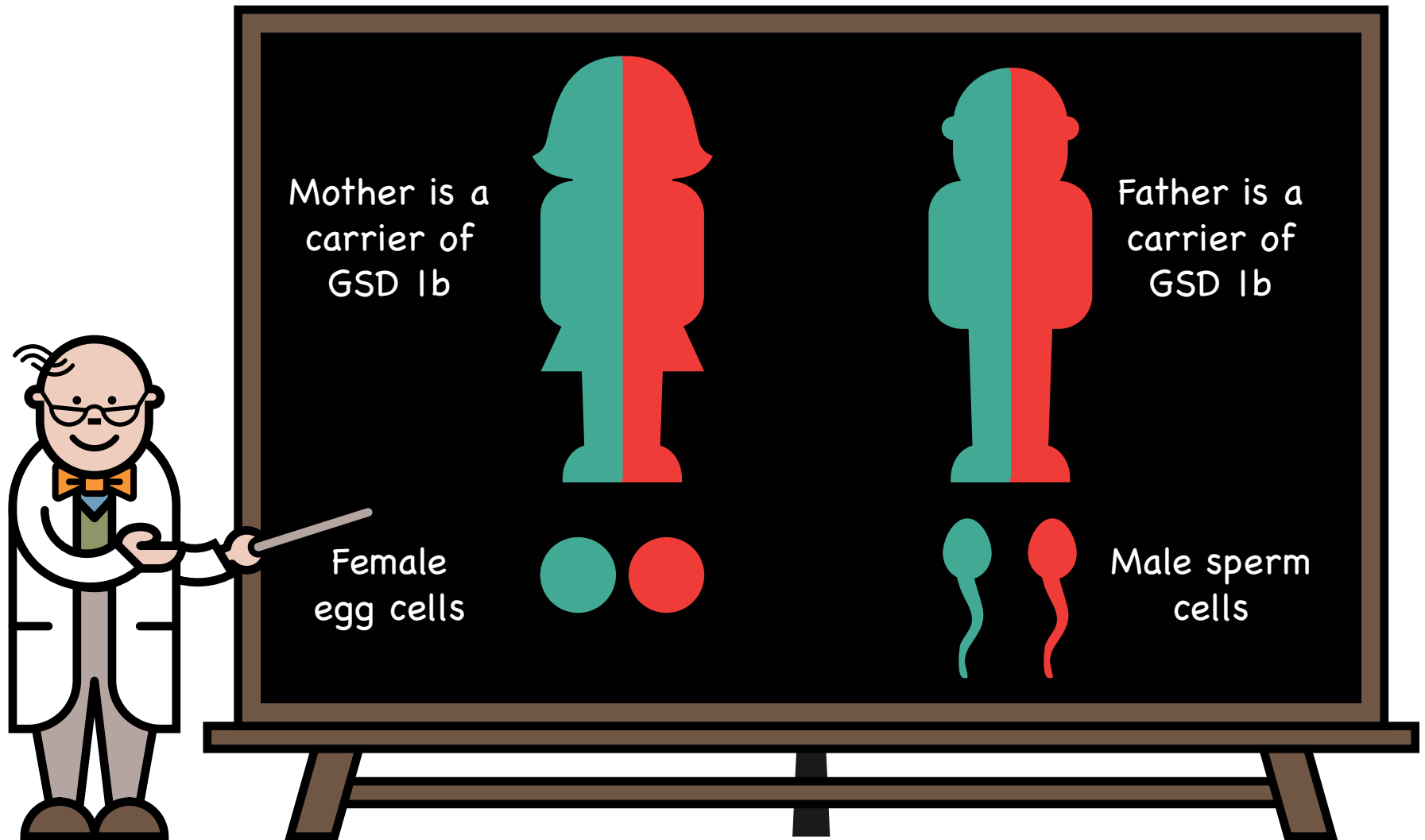
✓ GSD 1b is an inherited condition. There is nothing that could have been done to prevent your baby from having GSD 1b

✓ Everyone has a pair of genes that makes glucose-6-phosphate translocase enzyme. In children with GSD 1b, neither of these genes work correctly. These children inherit one non-working glucose-6-phosphate translocase gene from each parent

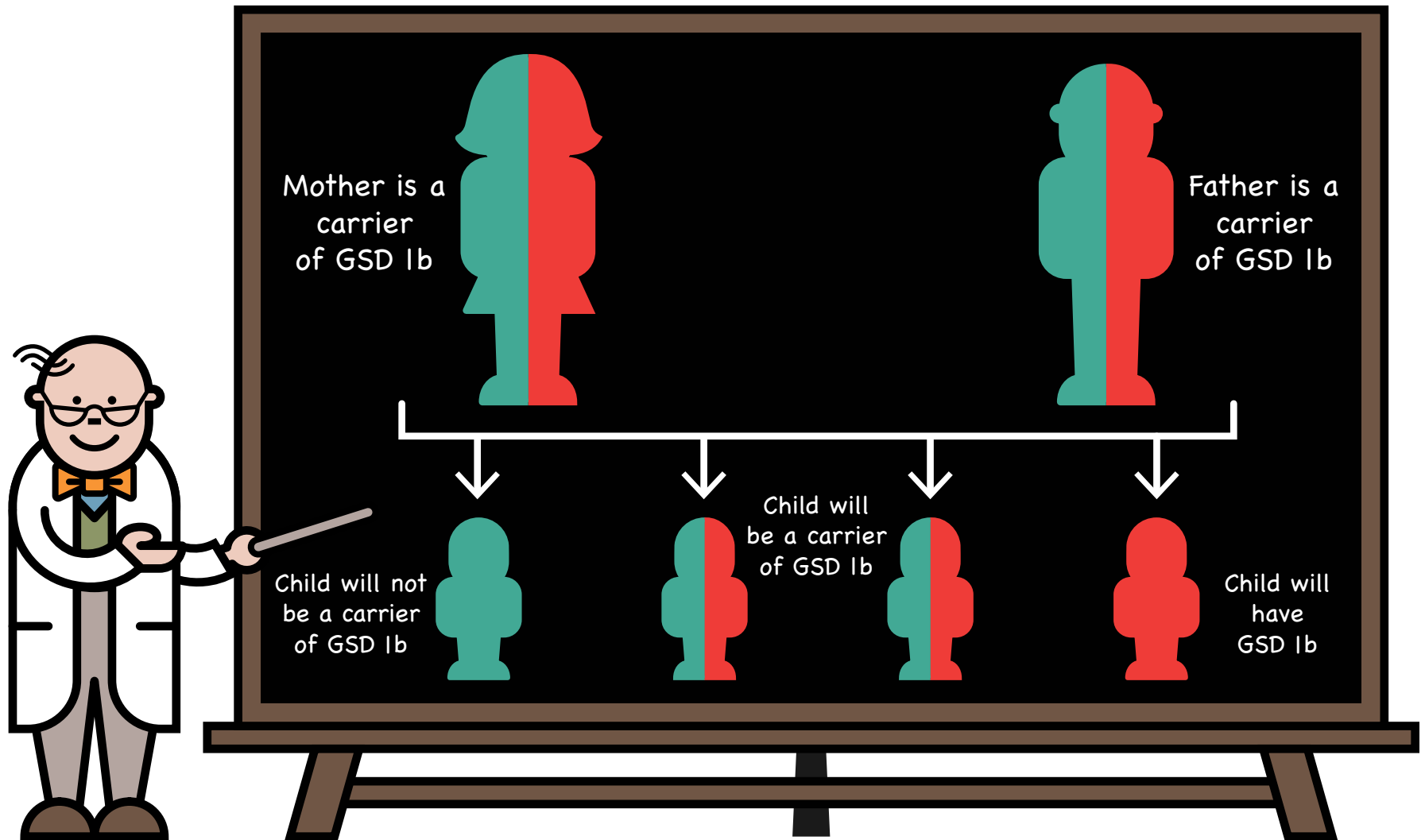
✓ Parents of children with GSD 1b are carriers of the condition

✓ Carriers do not have GSD 1b because the other gene of this pair is working correctly

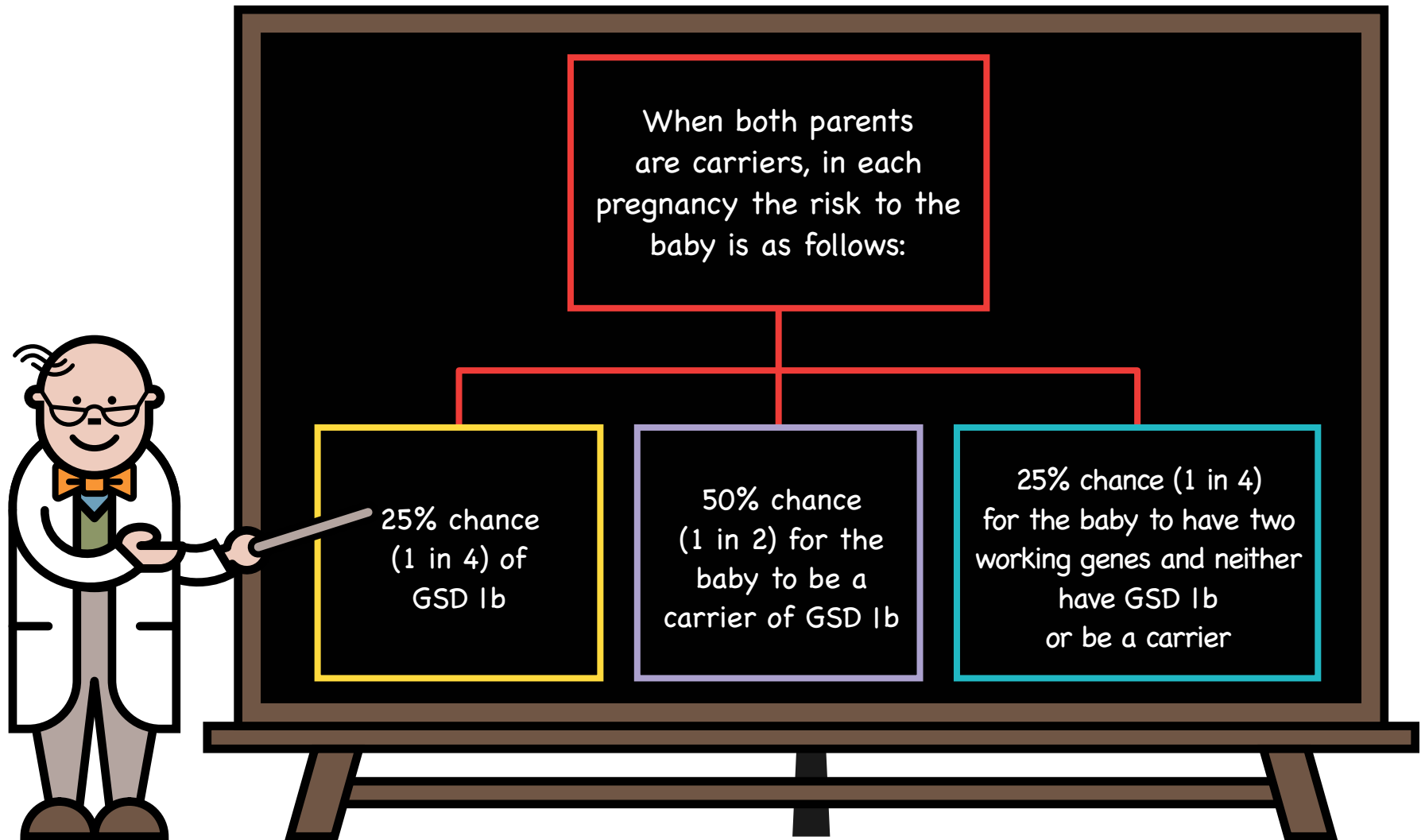
Inheritance



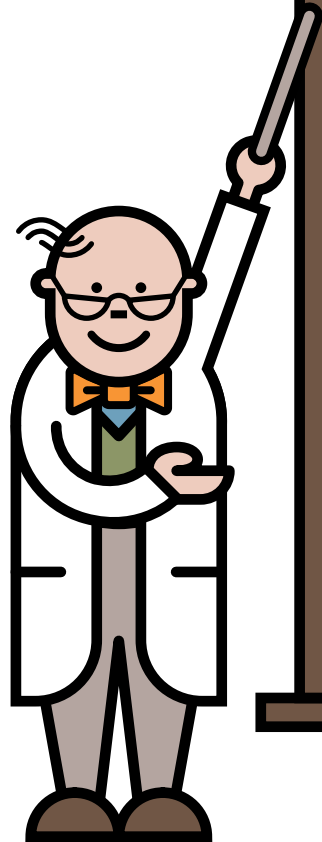
Inheritance



Future pregnancies



Take home messages

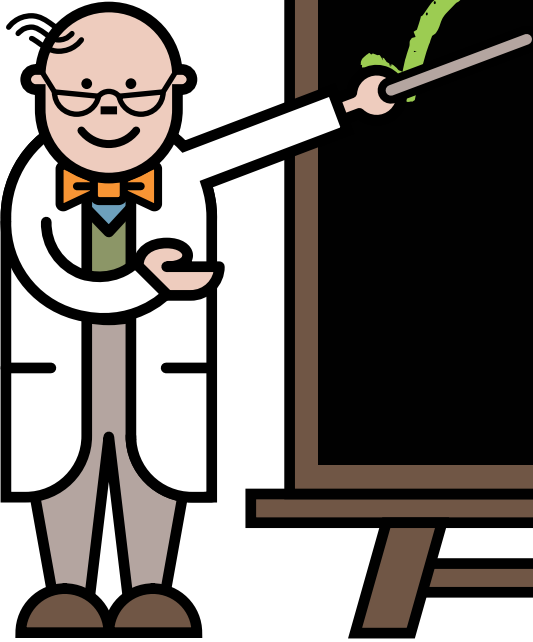


GSD 1b is a serious inherited metabolic condition that causes life threatening symptoms if left unmanaged

Children with GSD 1b are managed with regular meals and snacks based on carbohydrate, a healthy balanced diet and overnight feeding or regular feeds/drinks overnight

Remember, during illness, it is imperative that emergency feeds are started promptly, followed strictly and there are no delays

Take home messages



✓ GSD 1b is a serious inherited metabolic condition that causes life threatening symptoms if left unmanaged

✓ Children with GSD 1b are managed with regular meals and snacks based on carbohydrate, a healthy balanced diet and overnight feeding or regular feeds/drinks overnight

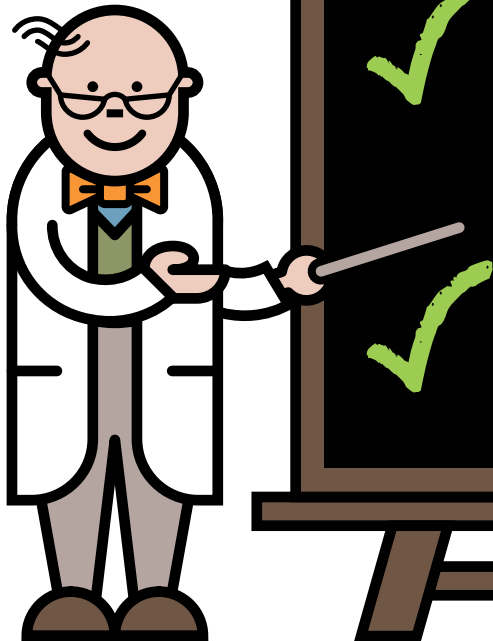
Remember, during illness, it is imperative that emergency feeds are started promptly, followed strictly and there are no delays

Take home messages

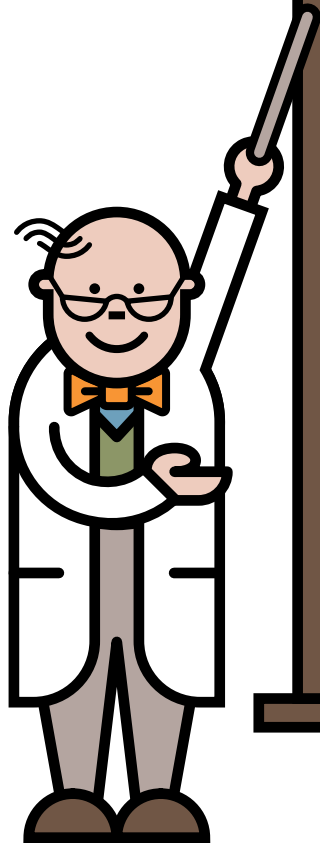
✓ GSD 1b is a serious inherited metabolic condition that causes life threatening symptoms if left unmanaged

✓ Children with GSD 1b are managed with regular meals and snacks based on carbohydrate, a healthy balanced diet and overnight feeding or regular feeds/drinks overnight

✓ Remember, during illness, it is imperative that emergency feeds are started promptly, followed strictly and there are no delays



Helpful hints



Always ensure you have a good supply of your dietary products and glucose polymer powder and it is in date

Special feeds and dietary products are prescribed by your GP and you obtain them from your pharmacy or home delivery

Medications to control fever should be given as normally recommended – always keep supplies available

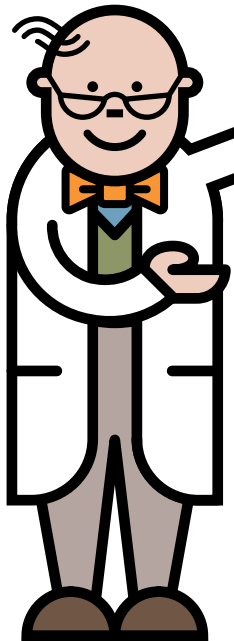
Remember to keep contact numbers of your metabolic team to hand

Helpful hints

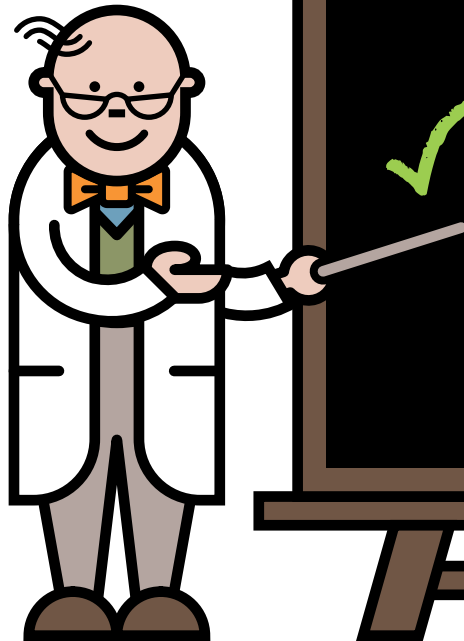
- ✓ Always ensure you have a good supply of your dietary products and glucose polymer powder and it is in date
- ✓ Special feeds and dietary products are prescribed by your GP and you obtain them from your pharmacy or home delivery

Medications to control fever should be given as normally recommended – always keep supplies available

Remember to keep contact numbers of your metabolic team to hand



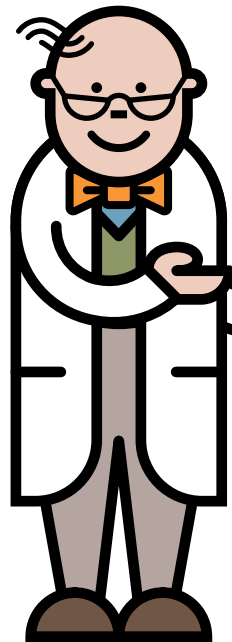
Helpful hints



- ✓ Always ensure you have a good supply of your dietary products and glucose polymer powder and it is in date
- ✓ Special feeds and dietary products are prescribed by your GP and you obtain them from your pharmacy or home delivery
- ✓ Medications to control fever should be given as normally recommended – always keep supplies available

Remember to keep contact numbers of your metabolic team to hand

Helpful hints



- ✓ Always ensure you have a good supply of your dietary products and glucose polymer powder and it is in date
- ✓ Special feeds and dietary products are prescribed by your GP and you obtain them from your pharmacy or home delivery
- ✓ Medications to control fever should be given as normally recommended – always keep supplies available
- ✓ Remember to keep contact numbers of your metabolic team to hand

Who's who

- My dietitians
- My nurses
- My doctors
 - Contact details, address, photos

BIMDG

British Inherited Metabolic Diseases Group



www.bimdg.org.uk

NUTRICIA

www.nutricia.co.uk

**METABOLIC
SUPPORT UK**

Your rare condition.
Our common fight.

www.metabolicsupportuk.org



www.agsd.org.uk